

HELIX CURVED STAIR LIFT

As Unique as You and Your Home

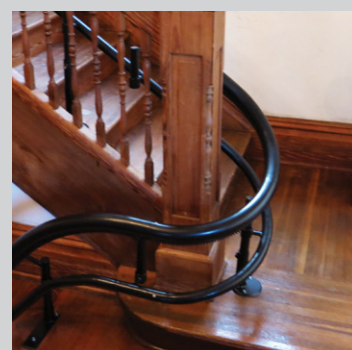
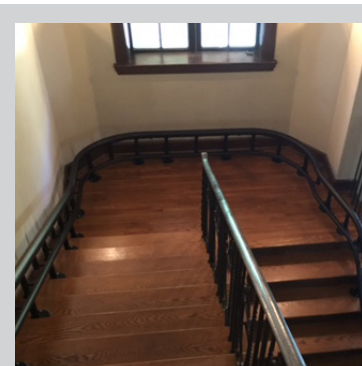


ONE OF A KIND

A Helix Curved Stair Lift is one of a kind. Harmar designs are crafted to fit your needs, staircase, and decor.

The Helix is built to last. Every staircase that is fitted with a Helix is measured with a calibrated camera kit for digital accuracy. Constructed with highly durable steel, custom precision-bent rails, and finished by experienced craftsmen, this true curved rail is highly engineered to give you an extraordinarily smooth ride.

Your unique path to independence will allow you to enjoy time with your family and your home on every level giving you independence, freedom and the quality of life you deserve.



TIGHTER CURVES

The Helix's narrow profile mounts closer to the wall, hugging the stairway with tighter bends and flowing radius curves. This means more room for you, and a comfortable smooth ride.

HELIX IS CUSTOMIZED TO YOU

Helix Curved Stair Lift



My Helix was made just for me. Most importantly, it was made for my independence, my confidence, my quality of life. It's a work of art that has given me full access to my home.

20

Feet Per Minute

350

Pound Capacity

16"

Folded Width

164'

Max Travel Length

Helix Series Product Specifications

Weight Capacity	350 lb (158.8 kg)
Drive System	Steel Rack and Pinion
Lift Speed	20 FPM
Seat	19" W x 15" D x 20.5" H (48.3 x 38.1 x 52.1 cm)
Folded Width	16" (40.6 cm)
Control Circuit	24V DC
Standard Color	Beige
Max Rail Length	164' (50 m)
Warranty	Limited Lifetime Warranty, 2-Year on Parts, 1-Year on Battery
Options	Emergency Safety, Wide Seat 21" (53.3 cm), Key Switch, Additional Call/Send, Additional Charging Station, Custom Colors

OUTSIDE OPTIONS

The Helix Curved Stair lift is not limited to the indoor confines of your home.

Highlights of the outdoor rail include:

- Weather treated rail
- ETL-rated Chassis
- Seat and Chassis cover included



Harmar.com | 800.833.0478

